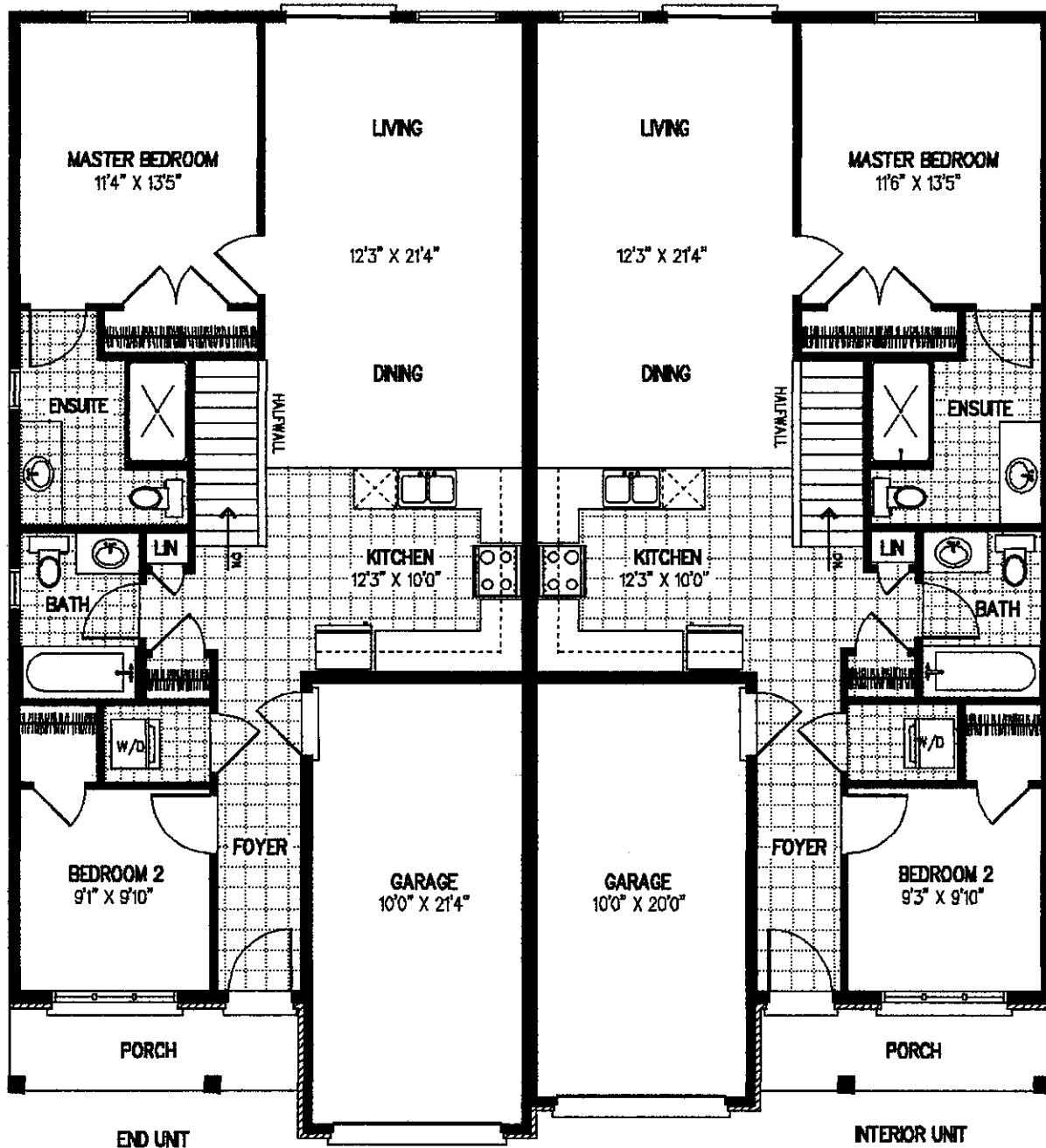


# NEILCORP GENERAL CONTRACTING LTD.

## THE WOODSIDE TOWNS

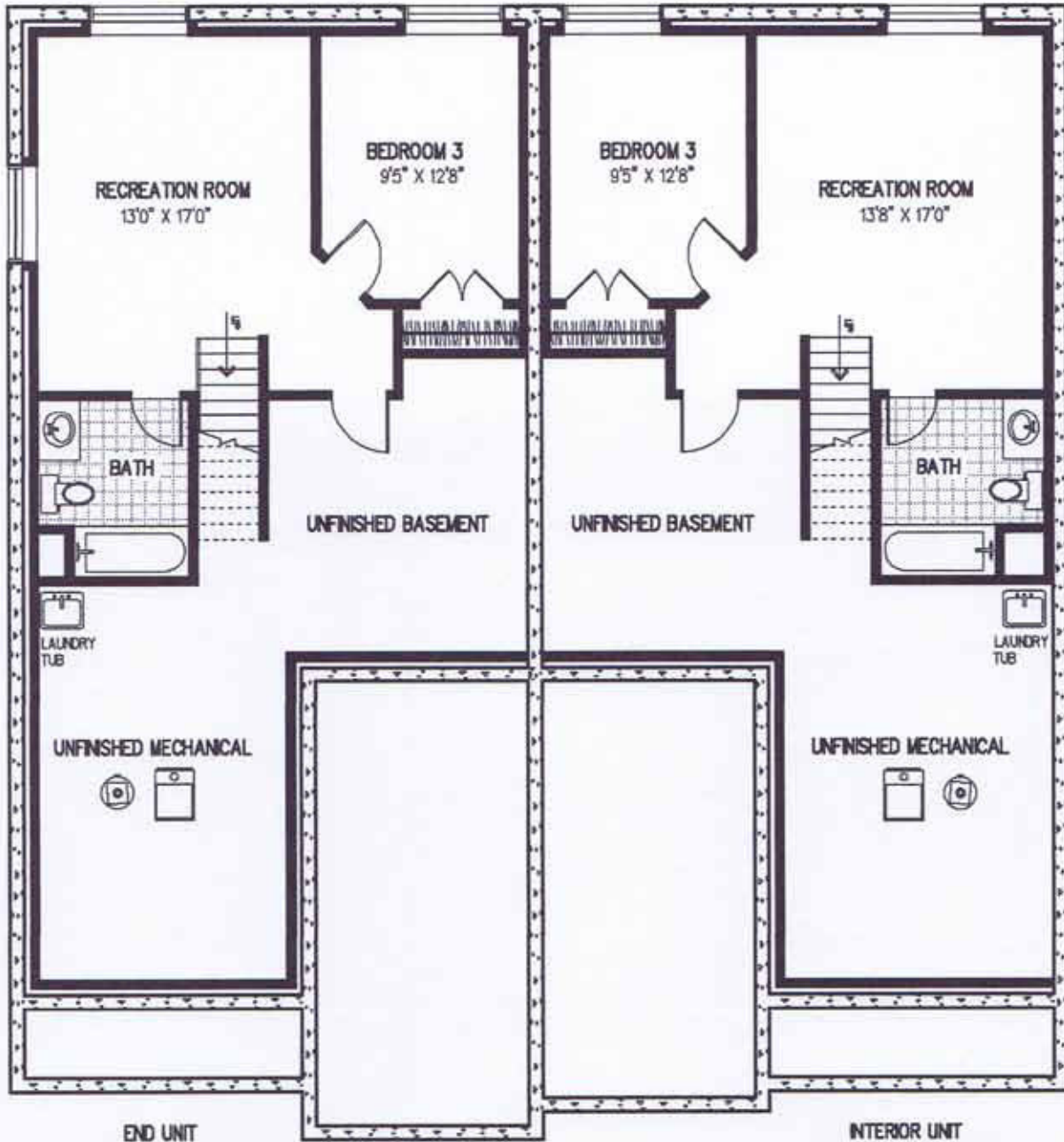
FLOOR AREA 1026 SQ.FT. PER UNIT



### GROUND FLOOR

ALL MEASUREMENTS, FLOOR AREAS AND SPECIFICATIONS ARE APPROXIMATE AND SUBJECT TO CHANGE WITHOUT NOTICE.

# NEILCORP GENERAL CONTRACTING LTD. THE WOODSIDE TOWNS



## BASEMENT – OPTIONAL FINISHING

FINISHED AREA 475 SQFT.

ALL MEASUREMENTS, FLOOR AREAS AND SPECIFICATIONS  
ARE APPROXIMATE AND SUBJECT TO CHANGE  
WITHOUT NOTICE.

Updated January 2017