

# THE WOODSIDE TOWN

## 1024sqft AVG/UNIT

ALL DIMENSIONS ARE APPROXIMATE. EXTERIOR ILLUSTRATIONS ARE ARTIST CONCEPTS ONLY AND MAY NOT BE AS SHOWN. E & OE, PLANS, MATERIALS AND SPECIFICATIONS ARE SUBJECT TO CHANGE WITHOUT NOTICE. ACTUAL REUSABLE FLOOR SPACE MAY VARY FROM THE STATED FLOOR PLAN. NUMBER OF STEPS VARIES DUE TO SITE GRADING. DRAWINGS MAY NOT BE TO SCALE

DRAWN BY



LAST UPDATED

JUNE 18/2024



**NEILCORP**

Award Winning Quality Homes

**LEGEND**

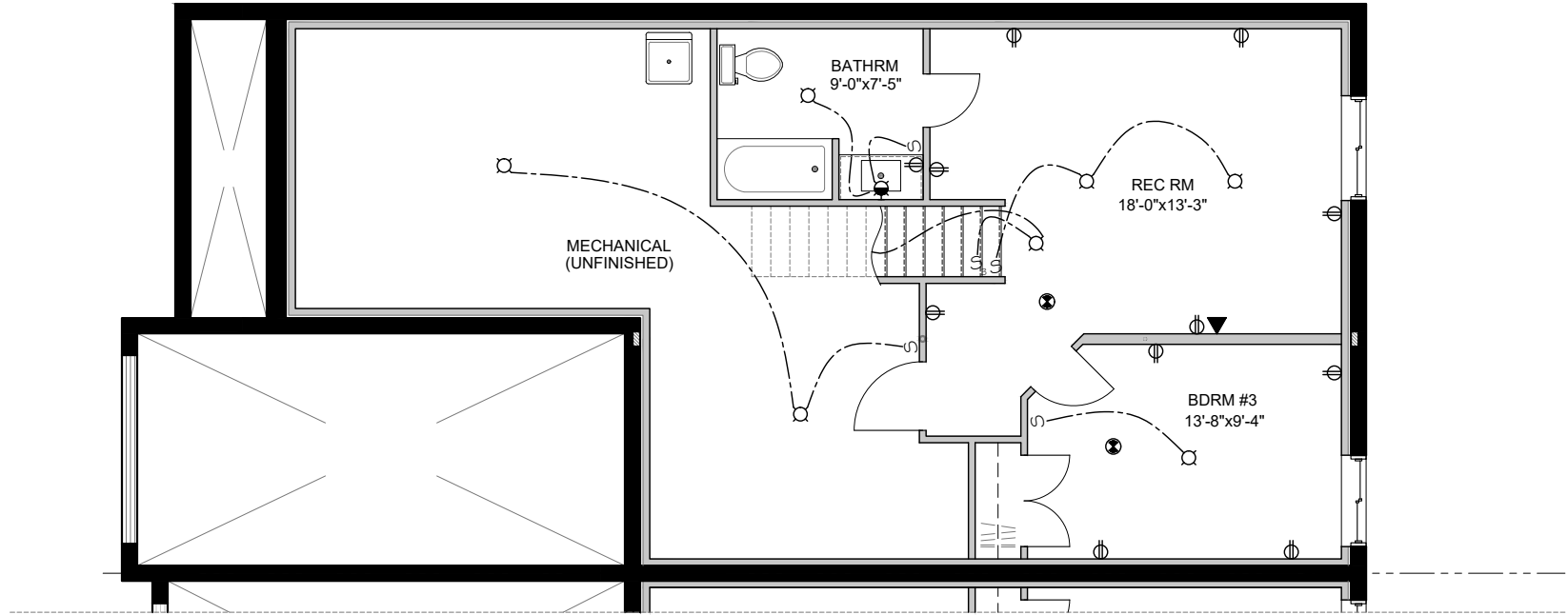
S SINGLE SWITCH  
 S<sub>3</sub> 3-WAY SWITCH

⊖ DUPLEX RECEPTACLE  
 ⊖<sub>c</sub> DUPLEX RECEPTACLE (AT CEILING)

⊙ WALL MOUNTED LIGHT  
 ○ CEILING MOUNTED LIGHT

Ⓟ PENDANT (DROPPED) LIGHT  
 ● STANDARD POT LIGHT

▲ TELECOMMUNICATIONS ROUGH-IN  
 ⊕ SMOKE & CARBON MONOXIDE DETECTOR



**THE WOODSIDE TOWN**  
 FIN. BASEMENT OPTION = 470sqft

ALL DIMENSIONS ARE APPROXIMATE. EXTERIOR ILLUSTRATIONS ARE ARTIST CONCEPTS ONLY AND MAY NOT BE AS SHOWN. E & OE, PLANS, MATERIALS AND SPECIFICATIONS ARE SUBJECT TO CHANGE WITHOUT NOTICE. ACTUAL REUSABLE FLOOR SPACE MAY VARY FROM THE STATED FLOOR PLAN. NUMBER OF STEPS VARIES DUE TO SITE GRADING. DRAWINGS MAY NOT BE TO SCALE

DRAWN BY



LAST UPDATED

JUNE 18/2024



**NEILCORP**  
 Award Winning Quality Homes